



*You can rely on us to find a solution
adapted to your environment*

www.cmar.fr



L 2500

**COMPACT COLD WATER
PAVEMENT CLEANER**

For your city centres,
pedestrian streets,
and pavements,
Make your City shine
with the **L 2500**.

ERGONOMICS

- Cab mounted on shock absorbers,
- Panoramic view of your tools and your work area,
- Insulated tinted windows and air conditioning,
- 2-seater cabin with high comfort suspended and adjustable seats,
- Colour reversing camera,
- Latest generation 7" TFT digital display.



AGILITY

- Hydrostatic compact carrier,
- 4-wheel drive, 4-wheel steering,
- Rear steering shaft with possibility of crab or circle driving,
- Hydraulic power steering.

ADAPTABILITY

▲ WASHING

L 2500 ramp

- Working width from 1,20 to 2,50 m
- Operating pressure 80 bars (option 200 bars)



Side jets

- Ramp equipped with 2 "fishtail" side jets.



COMPACT COLD WATER
PAVEMENT WASHER

L 2500

Used in many French and other international cities.



▲ CLEANING

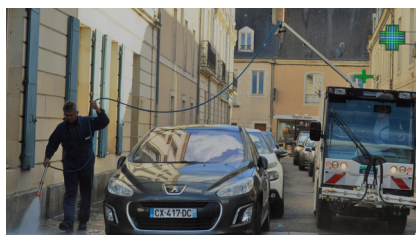
CC 1200 cleaning bell

- Cleaning up to 200 bars.



Jib

- Washing jib **integrated with the tank**, 360° swivelling with reel.



The **L 2500** is particularly suitable for the maintenance of city centres and sidewalks.

With its washing, scouring and snow removal capabilities, you will find it absolutely **necessary throughout the year, even in Autumn, thanks to its leaf blower cleaner.**

Equipped **with 4-wheel drive and 4-wheel steering**, the **L 2500** cold water pavement cleaner ensures an **impeccable quality of work**, while **respecting our environment.**



SELF-SUFFICIENCY

2200 litres water tank



Secured technical unit



Spray gun for finishing work



CC 600 cleaning dome

- Manual operation at 200 bars for places difficult to access to.

▲ AT FALL



Leaf blower



▲ IN WINTER



- Multiple snow removal adjustable tools:
 - Front plough,
 - Salt spreader,
 - Convertible snow plough,
 - Snow broom,
 - Brining.



TECHNICAL INFORMATION

Carrier

Chassis	M 29 Compact carrier with hydrostatic drive, 4-wheel drive and 4-wheel steering
Engine power	Euro VI with direct injection, Power: 80 KW - 110 H.P.; 2600 rpm Cylinder capacity: 2970 cm ³
Traverse speed	0 - 25 km / h
Working speed	0 - 12 km / h
Cab	2-seater panoramic cabin with high comfort suspended seats
Suspensions	With helical springs and telescopic shock absorbers
Braking	Hydraulic servo brake Dual circuit braking on front and rear wheels with ABS Ventilated disk brakes
Front panel	Lifting force: 500 daN for various accessories

Washing equipment

Tank	Capacity: 2200 l Glass fibre reinforced polyester design with wave barrier With integrated technical lockable unit
Telescopic washing ramp	Composed of a fixed ramp and two movable ramps and two "fishtail" side jets operated by solenoid valves Working width from 1.20 m to 2.50 m
Washing pump	80 bars - 70 l/min, water-saving
High pressure unit	200 bars - 32 l/min, for cleaning functions
Touch screen control panel	For the functions of the washing equipment

GVW (Gross Vehicle Weight)	6000 kg
Total length with ramp	4840 mm
Total width	1350 mm

Height	2065 mm
Wheelbase	2190 mm
Ground clearance	200 mm

