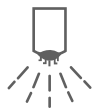




*You can rely on us to find a solution
adapted to your environment*

www.cmar.fr



LD 306

**HOT WATER PAVEMENT
WASHER / CLEANER**

Restoring the initial
appearance of the floors
of your City, such is the
mission of the **LD 306**
Make your City shine!

HOT WATER PAVEMENT WASHER / CLEANER

LD 306

Excellence of the cleaning service of your City.

This **LD 306** hot water cleaner is equipped with an **environmentally friendly cleaning method**. It combines the action of high pressure and hot water without using chemicals. Equipped with **4-wheel drive and 4 directional wheels**, the **LD 306** ensures an **impeccable quality of work**, and removes **grease stains** and **chewing gums** in an effective manner.



DESIGN

▲ 2 boilers

- Temperature up to 95°C.



▲ Tank: 1650 litres



ERGONOMICS

- Cab mounted on shock absorbers,
- Panoramic view of your tools and your work area,
- Insulated tinted windows and air conditioning,
- 2-seater cabin with high comfort suspended and adjustable seats,
- Colour reversing camera,
- Latest generation 7" TFT digital display.



AGILITY

- Hydrostatic compact carrier,
- 4-wheel drive, 4-wheel steering,
- Rear steering shaft with possibility of crab or circle driving,
- Hydraulic power steering.

ADAPTABILITY

RL 806 ramp

- Working width from 1.20 to 2.50 m,
- Operating pressure: 80 bars.



Side jets

- Ramp equipped with 2 "fishtail" side jets.



Jib

- Washing jib integrated with the tank, 360° swivelling with reel.



▲ HOT WATER WASHER

▲ CLEANING

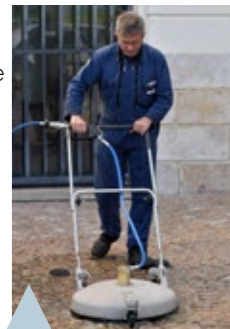
Front dome

- Cleaning dome equipped with high performance rotating joints,
- Working width: 1.20 m,
- Hot water cleaning up to 300 bars,
- Left and right hydraulic offset.



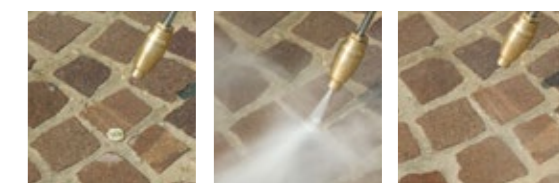
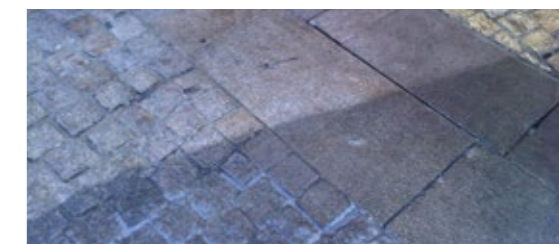
Manual dome CC 600

- Fitted on the front side of the vehicle to facilitate transport,
- Manual operation at 300 bars for places difficult to access to.



EFFICIENCY

- Restoring the initial appearance of stones and paved areas, and other surfaces of the city, such as is the mission of the LD 306.



Rotary nozzle gun for chewing gums removal.

TECHNICAL INFORMATION

Carrier

Chassis	M 29 Compact carrier with hydrostatic drive, 4-wheel drive and 4-wheel steering
Engine power	Euro VI with direct injection, Power: 80 KW - 110 H.P.; 2600 rpm Cylinder capacity: 2970 cm ³
Traverse speed	0 - 25 km / h
Working speed	0 - 12 km / h
Cab	2-seater panoramic cabin with high comfort suspended seats
Suspensions	With helical springs and telescopic shock absorbers
Braking	Hydraulic servo brake Dual circuit braking on front and rear wheels with ABS Ventilated disk brakes
Front panel	Lifting force: 500 daN for various accessories

Cleaning and washing equipment

Tank	Capacity: 1650 l Reinforced polyester design
Telescopic washing ramp	Composed of a fixed ramp and two movable ramps and two "fishtail" side jets operated by solenoid valves Working width from 1.20 m to 2.50 m
High pressure circuit	Hot water for cleaning functions: 300 bars - 43 l/min
Low pressure circuit	Cold water for rinsing functions: 80 bars - 70 l/min
Touch screen control panel	For the functions of the washing equipment
Boilers	2 boilers Temperature: 95°C

GVW (Gross Vehicle Weight)	6000 kg
Total length with cleaning bell	5614 mm
Total width	1350 mm

Height	2125 mm
Wheelbase	2190 mm
Ground clearance	200 mm

